

# Infinitives

Infinitives are forms of verbs that can be used as a noun, adjective, or adverb.  
Usually, infinitives start with “to” before the base verb.

Ex) I want **to win**.

Explanation: “To win” is an infinitive that is used as a *noun*, the idea of winning.

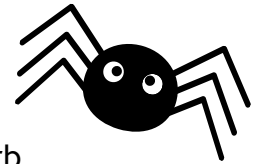
Ex) She is the best player **to win** the game.

Explanation: “To win” acts as an *adjective* that modifies “player”

Ex) We practice diligently **to win** the game.

Explanation: “To win” is *adverbial* because it tells why the action is necessary.

**Directions: Underline the infinitives in each sentence. Then, determine the function of the infinitive.**



1. To prank his brother with a fake spider was Tim’s ultimate goal.

a. noun

b. adjective

c. adverb

2. The detective paused to analyze the cryptic note left at the crime scene.

a. noun

b. adjective

c. adverb

3. She tried to juggle flaming torches, but only succeeded in singeing her eyebrow.

a. noun

b. adjective

c. adverb

4. She picked a book to read during the flight.

a. noun

b. adjective

c. adverb

5. Catherine screamed upon realizing she had forgotten to lock the door.

a. noun

b. adjective

c. adverb

6. The athlete had a goal to achieve before retiring.

a. noun

b. adjective

c. adverb

7. To catch the early train, he left the house as soon as the sun came up.

a. noun

b. adjective

c. adverb