

Compound Adjectives

Compound adjectives are made up of two or more words. Usually, hyphens are used, but sometimes compound adjective don't need hyphens. Compound adjectives work together to describe a noun and are considered a single descriptive unit.

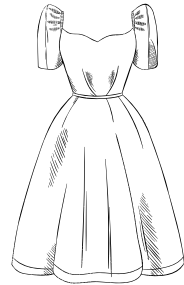
Ex) The celebrity was **well-known**. (compound adjective is *hyphenated*)

Ex) The celebrity was **overworked**. (compound adjective is *closed*)

Ex) The celebrity has **Type 2** diabetes. (compound adjective is *open*)

Directions: Underline the compound adjective. Then, circle the noun that it modifies.

1. She wore a well-fitted dress to the ball.
2. The high school students organized a charity event.
3. They moved into a newly-built apartment downtown.
4. They enjoyed a full moon hike in the mountains.
5. The chef prepared a mouth-watering dessert for the guests.
6. The air traffic controller managed the busy skies efficiently.
7. She has a lifelong passion for painting.
8. He is a part-time instructor at the community college.
9. The worldwide pandemic affected economies globally.



Directions: Categorize the compound adjectives from questions #1-9 above.

Closed	Open	Hyphenated
worldwide lifelong	air traffic full moon high school	part-time mouth-watering newly-built well-fitted